

Wolf's Hollow County Park

Park Features

- Parking Area with Disabled Access
- Restrooms
- Picnic Area
- Information/Education Kiosk
- Gate
- Fenceline
- Individual Tree/Shrub
- Structure
- Historic Structure or Ruin
- Bridge
- Culvert
- Ford
- Stream Crossing
- Scenic Overlook/Vantage Point

Park Area Designations

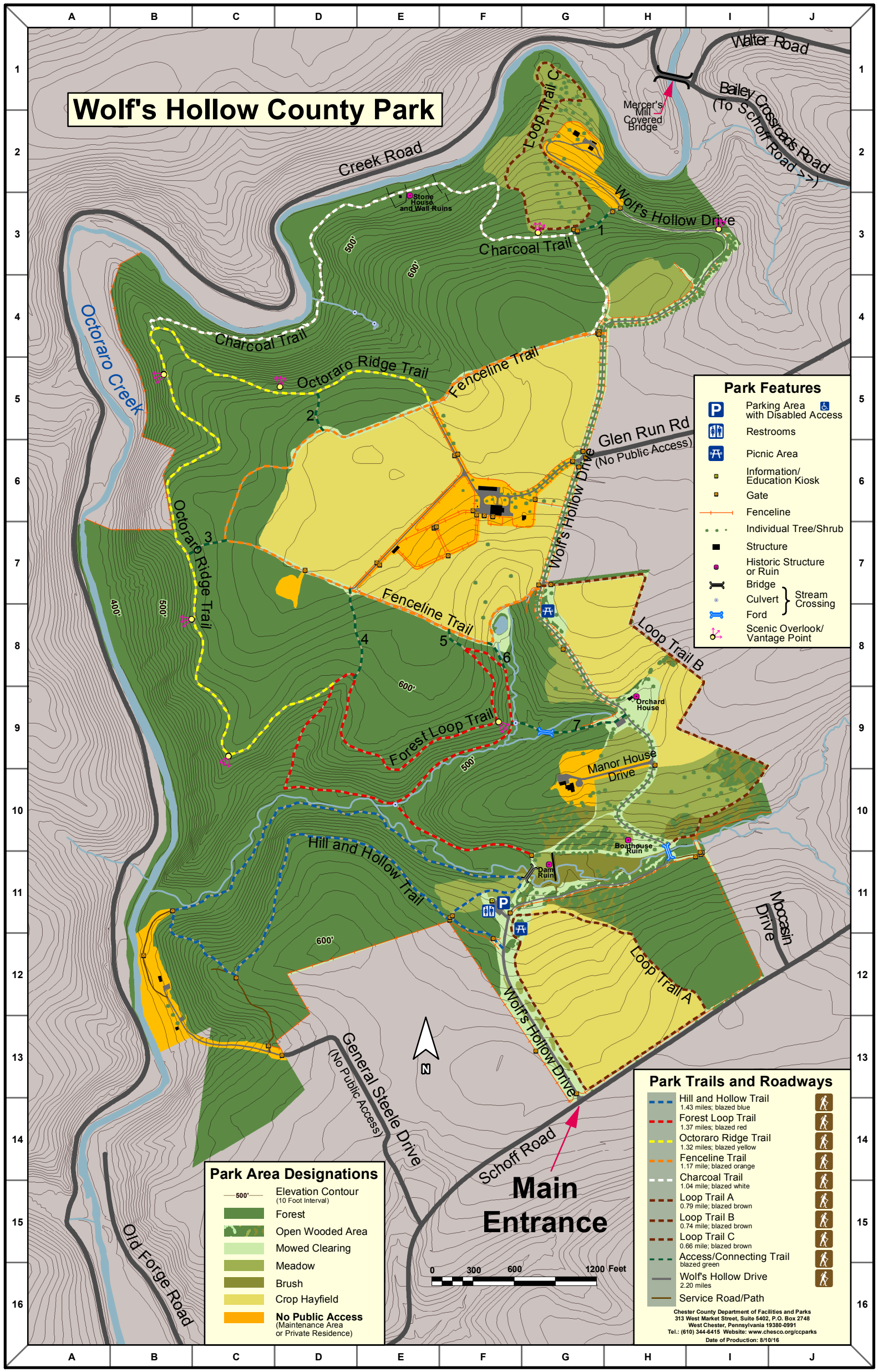
- 500' Elevation Contour (10 Foot Interval)
- Forest
- Open Wooded Area
- Mowed Clearing
- Meadow
- Brush
- Crop Hayfield
- No Public Access (Maintenance Area or Private Residence)

Park Trails and Roadways

- Hill and Hollow Trail
1.43 miles; blazed blue
- Forest Loop Trail
1.37 miles; blazed red
- Octoraro Ridge Trail
1.32 miles; blazed yellow
- Fenceline Trail
1.17 mile; blazed orange
- Charcoal Trail
1.04 mile; blazed white
- Loop Trail A
0.79 mile; blazed brown
- Loop Trail B
0.74 mile; blazed brown
- Loop Trail C
0.66 mile; blazed brown
- Access/Connecting Trail
blazed green
- Wolf's Hollow Drive
2.20 miles
- Service Road/Path



Main Entrance



Chester County Department of Facilities and Parks
313 West Market Street, Suite 5402, P.O. Box 2748
West Chester, Pennsylvania 19380-0991
Tel.: (610) 344-6415 Website: www.chesco.org/ccparks
Date of Production: 8/16/16